



SABRE  
HIFI



iEAST

SoundStream/SoundStream Pro

Quick Start Guide

Wireless Multi-room Audio System

[www.ieast.net](http://www.ieast.net)

# Introduction

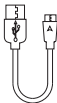
iEAST sound streamers are innovative and dedicated wireless streamers, which are able to turn your current speakers, soundbars and home theatre speakers into a Wireless Multi-Room Sound System by connecting to your home WiFi Network. The specialized iOS and Android App offers the easiest and best user-friendly experience for music streaming and multi-room sound system set up.

iEAST streamers also provide the most powerful playback options, which allow you to stream synchronized music or multiple kinds of music from your cellphone, online music services or your home media center with awesome sound quality in multiple rooms.

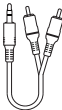
# What's In The Package



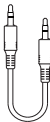
Unit x 1



USB Cable x 1



RCA Breakout Cable x 1



Line-in Cable x 1



Quick Start Guide x 1



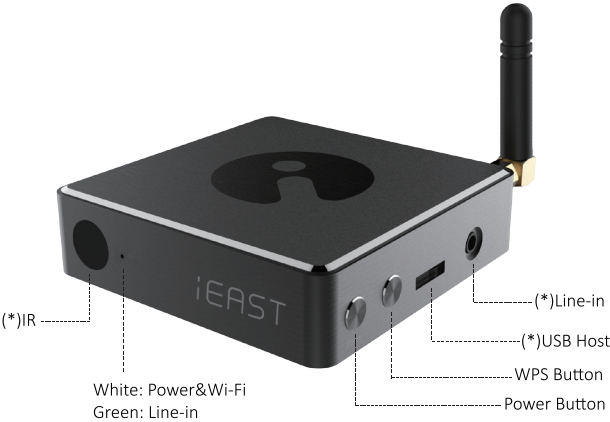
USB power  
adapter x 1



(\*)Infrared Remote  
Controller x 1

(\*) Only available on SoundStream Pro

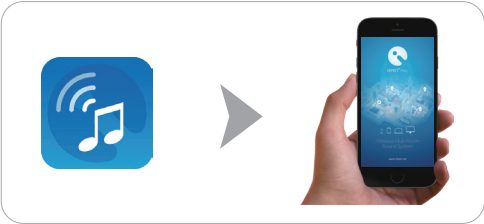
# Interface



Features with (\*) only available on SoundStream Pro



# How It Works



# App Download

- To use your iEAST unit, please download iEast Play App from App Store or Play Store.



available in store:



## Connection Option 1

### Wireless Connection for iOS and Android devices

- Connect your cellphone to your home network.
- Run iEast Play App and choose Add Device.
- Type the password of your home router in iEast Play App.
- Press WPS button on iEAST “WPS” to configure.




< Back    SETUP WI-FI    Next >

Press the WPS button to connect to your WiFi

WPS

< Back    ENTER PASSWORD

  
IEAST

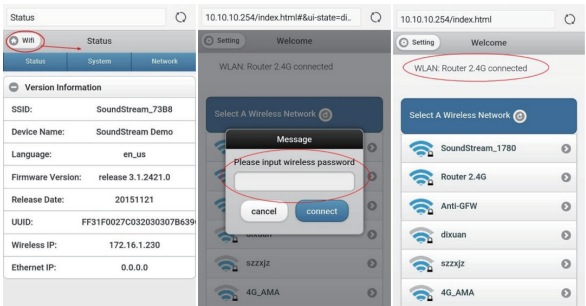
Connect

1	2	3	4	5	6	7	8	9	0
q	w	e	r	t	y	u	i	o	p
a	s	d	f	g	h	j	k	l	
↑	z	x	c	v	b	n	m		✕
?	123	,							✓

\*Once connected, the device will be encrypted, the password is the same as your router's. To connect more units, no need to input password.

## Connection Option 2

- Enter “Setting”-> directly connect iEAST units.
- After connecting with your iEAST unit, you can stream local music from the phone to the speaker.
- To open the control platform enter <http://10.10.10.254/> into your browser.
- Choose WiFi-> your WiFi Router-> enter the password and you should connect successfully.



## Connection Option 3

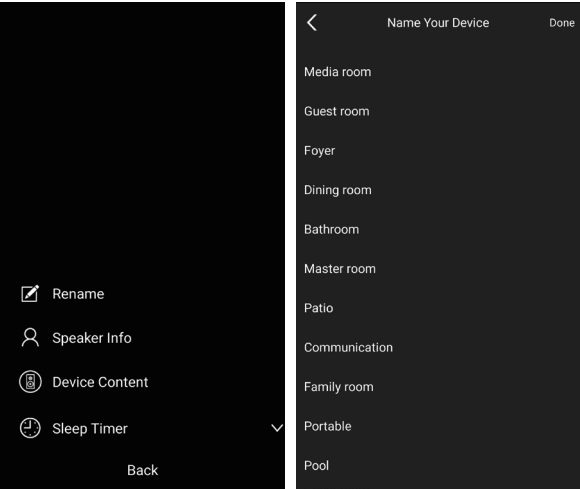
The device can be directly connected via LAN w/o input the password. Users should follow steps to get the device encrypted:

Setting>Speaker info>Device Password.



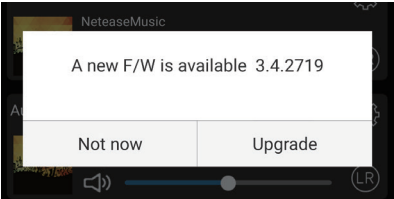
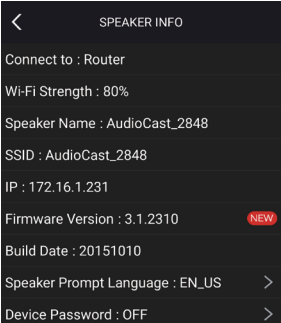
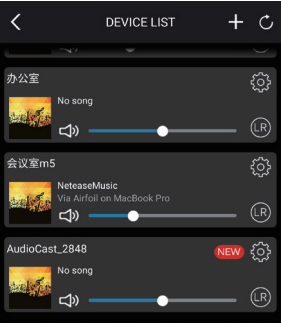
# Name Your Device

- After login, you can name your device as follows



# Firmware Upgrade

- OTA upgrade can be done globally as follows.



# Multi-Room Streaming Control

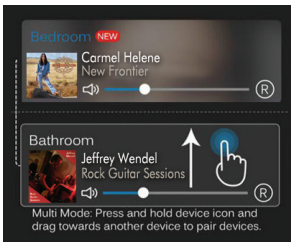
- iEAST units can be set up in different groups, such as “all rooms play same song”, “two rooms play song A, three rooms play song B”, or “each room plays a different song”, etc.

## - To Set up Multi-room

On the control panel press one device and hold, drag it above the device you would like to pair it with.

## - To Remove Multi-Room:

On the control panel, press the device you want to remove and hold, then drag it to the blank space.



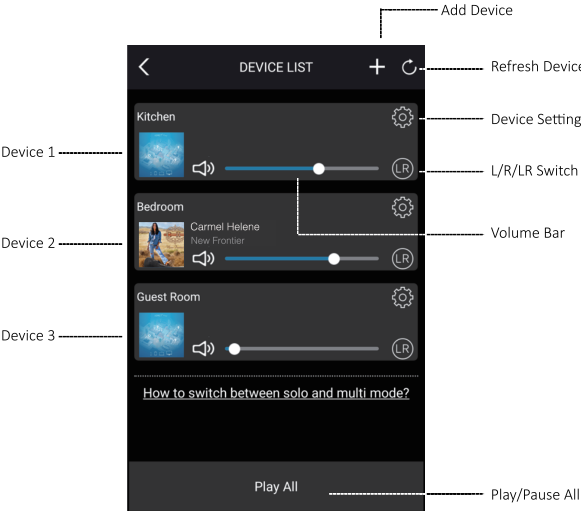
Set up Multi-room



Remove Multi-Room

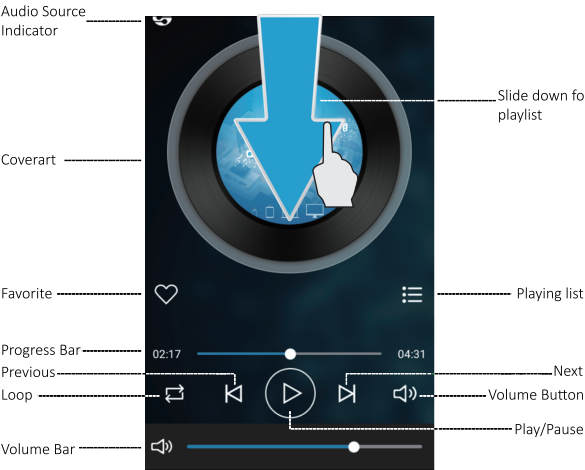
# Device Control

Device control includes multi-room streaming control, multi-channel control, device setting, device rename, speaker info, password setup, language setting, timing power off, music alarm, 6 playlist content(only available on SoundStream Pro).



# Playback Menu

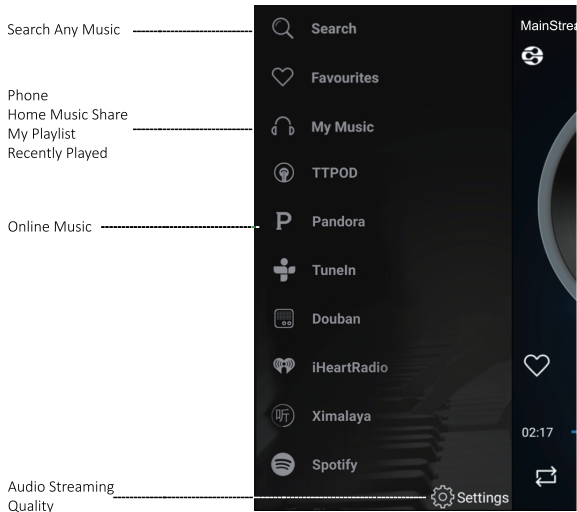
Playback offers a comprehensive control for music playback. It will change the background color and cover art according to your music style.



# Audio Source

The playlist will be shown under this menu:

- My Music: Local stored music/Home Music Share
- Spotify: Spotify streaming requires a subscription with premium account, it will jump to Spotify app to stream.

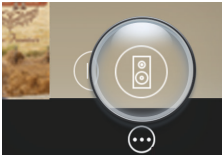
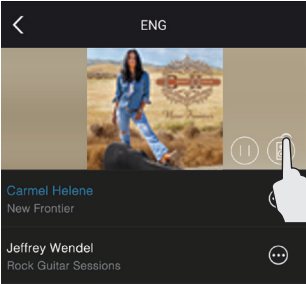


- \* Apple music is only available on the Apple products via airplay.
- \* Online music service will change according to updates.

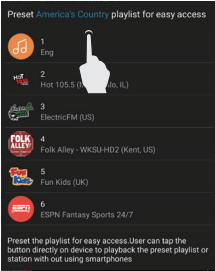
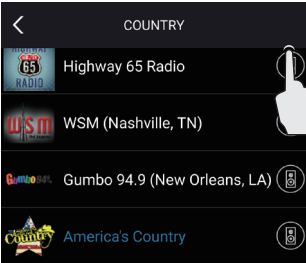
# 6 Playlist Shortcuts Pre-set Define

SoundStream Pro units offer 6 playlist define on the remote controller number buttons. You can easily set up shortcuts for quick play of your favorite music without cellphone.

## Local Music Playlist:



## Online Service Playlist:



# FAQ

1. Does it support Airplay and third-party DLNA apps?

Yes, it supports Airplay perfectly and third-party DLNA apps, such as BubbleUPNP, AllCast, iMediaShare...

2. Can you suggest some NAS brand which is well compatible with your device?

Qnap and Synology are suggested NAS device, open the DLNA option in setting

3. How many rooms does the system support to group up?

Up to eight, when in good wifi condition.

4. What is the distance your wireless audio system can cover?

Our system connects with your home router, you can stream your music anywhere WiFi signal covers.

5. Can it work without Internet?

Our device will also give WiFi hotspot itself. You can stream the music from your mobile device by connecting the device hotspot.

6. What it will happen when call coming in? Can I do other things when stream music?

Our system can run in the background, it will keep playing while you are having a call, and you can also do other things, like playing games.

7. Can it play high resolution music? Does it support 24bit/192khz sample rate?

Yes, our device can play APE, FLAC within normal bit rate range. It also supports decoding 24bit/192khz music files.

8. How many languages does the App have?

Currently, we have English, French, German, Spanish and will offer more by online update.

Our device will auto-detect your mobile device language and switch to it automatically .





**© Copyright 2016 by iEAST. All Rights Reserved.**

The information contained in this manual is believed to be accurate and reliable. iEAST assumes no responsibility for any errors contained in this manual. iEAST reserves the right to make changes in the specifications and/or design of the above mentioned product without prior notice. The diagrams contained in this manual may also not fully represent the product that you are using and they are for illustration purposes only. iEAST assumes no responsibility for any differences between the product mentioned in this manual and the product you may have.